

GAMS

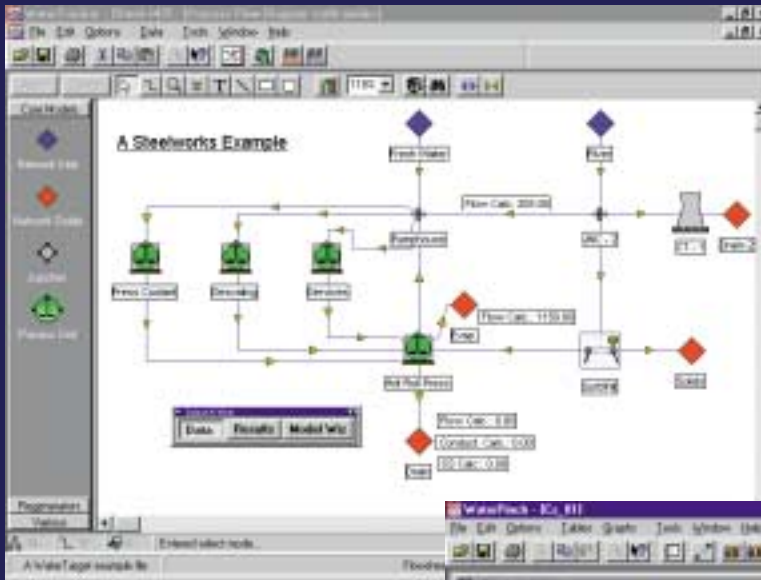


Modeling
for the real
world!

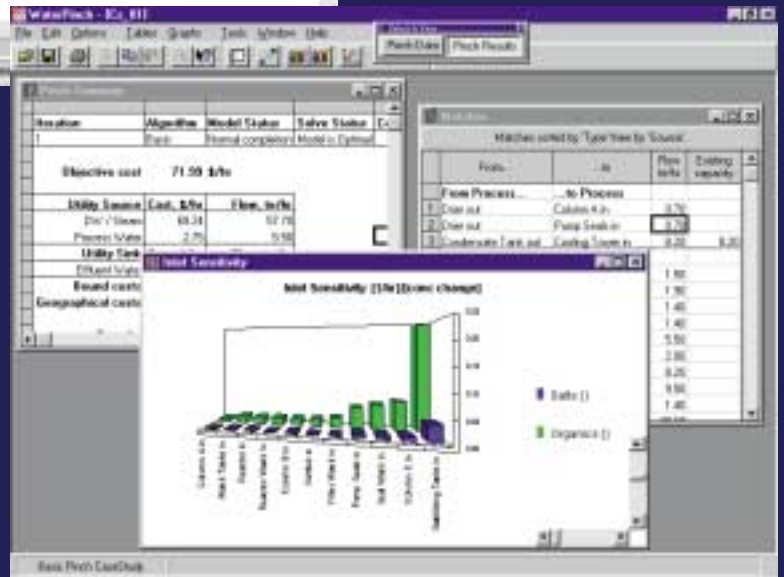
Applications
 Platforms
 Solvers
One Modeling Engine
Different

Industrial water and wastewater minimization

WaterTarget 1.2™ is an award winning suite of software tools comprising:



WaterTracker™, for rapid production of site-wide water and containment balances.



WaterPinch™, for selection and design of the best water re-use, re-generation and effluent treatment systems.

For further information about this application, please contact Richard Tainsh:
rtainsh@linnhoffmarch.com or call: +44 (0) 1606 815 100



GAMS Development Corporation

1217 Potomac Street, N.W.
Washington, D.C. 20007, USA
Tel.: +1-202-342-0180
Fax: +1-202-342-0181

sales@gams.com <http://www.gams.com>

GAMS



in Europe: **GAMS Software GmbH**

Eupener Str. 135-137
50933 Cologne, Germany
Tel.: +49-221-949 9170
Fax: +49-221-949 9171

info@gams.de <http://www.gams.de>